



## RAPTOR 300r

THE NEXT LEVEL IN  
„OFF-ROAD-MOBILITY“



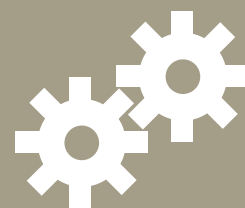
***Pinotti®***





## ALL TERRAIN MOBILITY...

The RAPTOR 300r is designed for mulching operations on rough and challenging kinds of terrain. Its undercarriage adapts perfectly to any ground type, be it swampy, uneven, or steep. The extremely low ground pressure that it exerts prevents it from sinking into soft soil. Its sturdy rubber track means that it can even cross roads without damaging the asphalt. The RAPTOR 300r is thus ideal for working underneath power cables, on pipelines, and on roads. It sets new standards in traditional site clearance. The RAPTOR 300r combines unbeatable efficiency with unparalleled mobility, enabling you to work reliably and productively.



## EFFICIENCY

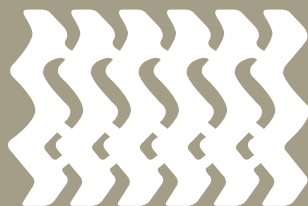
The mechanical drive of the RAPTOR 300r transfers the total power to the mulcher without any loss, giving it a huge lifting height.





#### RELIABILITY

Reliability and durability are our top priorities. The double protection given to the mechanical drive guarantees reliable working.



#### MOBILITY

Whether it's on soft ground, steep terrain, or off road, the rubber track of the RAPTOR 300r knows no obstacles and even navigates asphalt roads with minimal effort.



#### SAFETY

We place the utmost importance on driver and vehicle safety. All of our safety systems are certified and doubly protected.





#### UNDERCARRIAGE »

- » Low ground pressure
- » Comfortable driving experience
- » Excellent off-road mobility

The undercarriage adapts to the ground conditions and prevents the vehicle from sinking into soft soil.



#### DRIVEN BY A POWER TAKE-OFF UNIT »

- » Maximum efficiency
- » Robust and durable
- » Flexible enough to handle all attachments

You can swap attachments according to your needs, meaning the RAPTOR 300r can be used as a multifunctional machine.



#### ELECTRONIC STEERING »

- » Floating position
- » Maximum load control
- » Fault diagnosis

The electronic steering facilitates numerous assistance functions that are unique in this industry.



#### CABIN »

- » Ergonomic design
- » Low background noise
- » Maximum comfort

The cab meets the highest safety standards and has achieved ROPS, FOPS, and "Frontguard" certification. The additional rear view camera gives a 360° view, providing ideal working conditions.

#### VEHICLE HIGHLIGHTS

**Primoth**











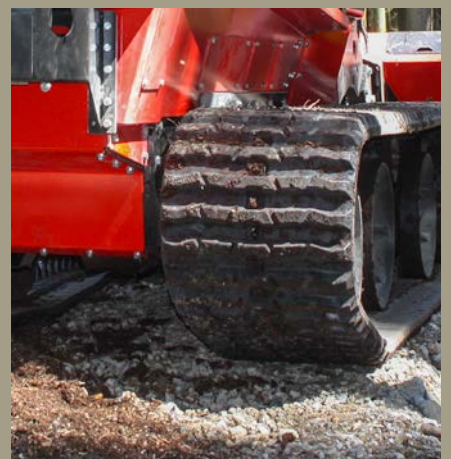
**... ALL TERRAIN  
MOBILITY**

**RUBBER TRACK »**

- » Enables high vehicle speeds
- » Optimal ground contact
- » No damage to asphalt

Its sturdy rubber track means that the RAPTOR 300r can be used in any area of operation and opens up a whole swathe of new possibilities. This makes the RAPTOR 300r unique for this area of application.

**Prioith**





**EMISSIONS LEVEL 4**

Engine	CAT C7.1
Power	279 PS
Displacement	7 l
Max. torque	1,257 Nm
Tank capacity	360 l
Urea tank (AdBlue)	26 l

Voltage	24 V
Hydraulic tank	56 l

**EMISSIONS LEVEL 3**

Manufacturer	CAT C7.1
Power	279 PS
Displacement	7 l
Max. torque	1,030 Nm
Tank capacity	360 l

Voltage	24 V
Hydraulic tank	56 l

**ATTACHMENTS**

Power take-off unit:	
M550m	2,000 kg
Many more 3-point attachments	

**UNDERCARRIAGE**

Max. speed	10 km/h
------------	---------

Track width	vehicle width	(track gauge)
700 mm	2,450 mm	(1,750 mm)

**MOBILITY**

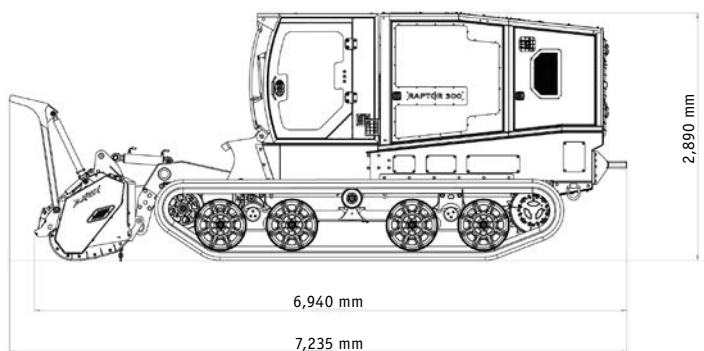
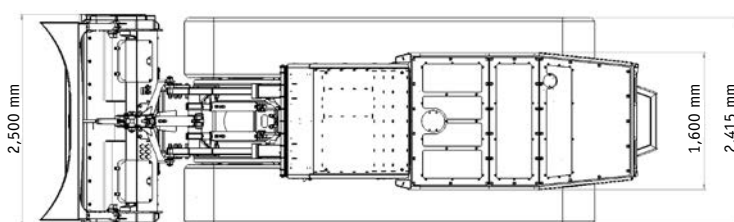
Weight with M550m	14,560 kg
Weight without mulcher	12,560 kg

Ground pressure:	
700 mm plates	265 g/cm <sup>2</sup>

Climbing ability sideways	30°
Climbing ability frontal	45°

**OPTIONS**

Rope winch
Overpressure system
Arctic Package
GPS
Engine heater

**TECHNICAL  
DATA****Prio 300**



Other sales and service sites can be found on **[www.prinoth.com](http://www.prinoth.com)**

AHWI Maschinenbau GmbH  
Im Branden 15  
88634 Herdwangen  
GERMANY  
Tel. +49 (0)7557 9212-0  
Fax +49 (0)7557 9212-92  
[ahwi@prinoth.com](mailto:ahwi@prinoth.com)

PRINOTH AG  
Brennerstraße 34  
39049 Sterzing  
ITALY  
Tel. +39 0472 72 26 22  
Fax +39 0472 72 26 18  
[prinoth@prinoth.com](mailto:prinoth@prinoth.com)

PRINOTH Ltd.  
1001, J.-A.-Bombardier Street  
Granby Qc J2J 1E9  
CANADA  
Tel. +1 450 776 3600  
Fax +1 450 776 3685  
[prinoth.canada@prinoth.com](mailto:prinoth.canada@prinoth.com)