

HSM 805S and 904S



HSM 805S and 904S



- Clamping arms on front shield
- Stable centre part
- High, parallel-guided straight shield
- Strong Adler cable winches
- Clearly arranged and tested safety cab
- Large sized NAF planetary axles
- Easy maintenance thanks to a tilted cab



Technical subject to change. May 2016 HSM805S_904S_et_photon-sh-0516



HSM Hohenloher Spezial-
Maschinenbau GmbH & Co. KG

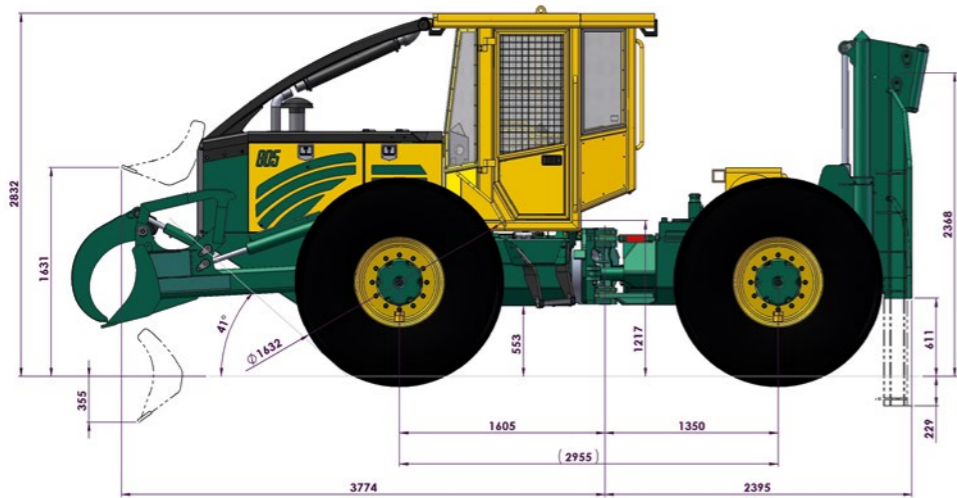
Technik die Freude macht.

D-74635 Neu-Kupfer
Im Greut 10
Phone + 49 7944 / 9191-0
Fax + 49 7944 / 9191-77
E-mail: info@hsm-forest.com
www.hsm-forest.com



Technik die Freude macht.

805S



Engine:

- IVECO
- NEF 4 cyl. Common Rail Turbo / EuroMot TIER3
- Engine output: 104 kW (141 DIN horsepower)
- Max. rpm: 2200 rpm
- Max. torque: 608 Nm at 1600 rpm
- Engine capacity: 4.5 litres

Transmission:

- Hydrostatic transmission, Rexroth
- 2-step NAF transfer gearbox

Axles:

- NAF heavy duty planetary axles
- 100% selectable differential locks

Brake:

- 2-circuit brake, wet disk brakes
- Spring-loaded parking brake

Steering:

- 44° articulated steering

Tyres:

	Size:	Min. total width
• Standard:	23.1 x 26	2400 mm
• Optional:	18.4 x 26	2200 mm
	28L-26	2600 mm

Diesel tank:

- 160 litres

Hydraulics:

- Pump output: Flow rate: 152 l/min at 1600 rpm
Pressure: up to 350 bar
- Tank: 90 litres
- Hydraulic liquid: Standard: HLP-46 mineral oil
Optional: Panolin HLP SYNTH with Kleenoil
Microfiltration water hazard class 1

Cabin:

- Rubber-mounted, soundproofed
- Tested safety cab
- Mechanically suspended comfort seat
- Hot water heating

Electrics:

- 24 V, 90 A alternator
- 2 maintenance-free dry-cell batteries

Instruments:

- Tachometer with operating hour counter, coolant temperature, tank gauge, indicator lights

Winch:

- Standard: Adler HY 20-O (2 x 100 kN) double-drum winch
Max. cable take-up of 14 mm, 100 m without cable equipment!
- Optional: Adler HY 24-O (2 x 120 kN) double-drum winch
Max. cable take-up of 14 mm, 140 m
Adler HY 24-LO (2 x 120 kN) double-drum winch
Max. cable take-up of 14 mm, 190 m
Adler HY 32-O (2 x 160 kN) double-drum winch
Max. cable take-up of 14 mm, 150 m
Adler HY 32-LO (2 x 160 kN) double-drum winch
Max. cable take-up of 14 mm, 200 m

Weight:

- 9300 kg (standard)
- Weight distribution: Front axle: 60%
Rear axle: 40%

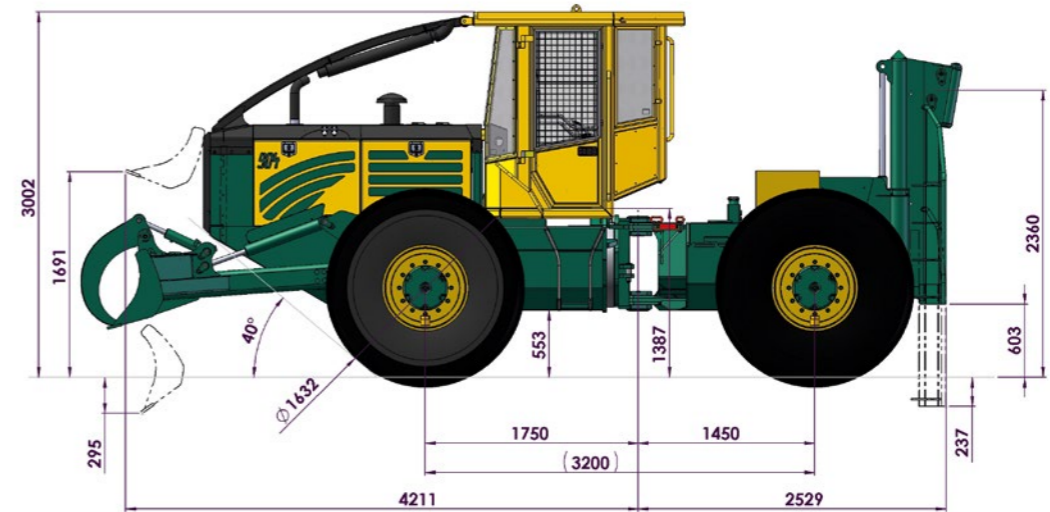
Standard equipment:

- 2200 mm wide front polder shield, lowerable straight shield
2200 mm wide, fire extinguisher, first-aid kit, warning triangle, tool set

Special equipment:

- Radio control, cable winch, wireless driving, clamping arms for Front shield, steering with joystick, road lighting set

904S



Engine:

- IVECO
- NEF 6 cyl. Common Rail Turbo / EuroMot TIER3
- Engine output: 175 kW (238 DIN horsepower)
- Max. rpm: 2200 rpm
- Max. torque: Depending on engine output: 1020 Nm at 1500 rpm
- Engine capacity: 6.7 litres

Transmission:

- HSM High Speed Drive (71 series)
- 2-step NAF transfer gearbox

Axles:

- NAF heavy duty planetary axles
- 100% selectable differential locks

Brake:

- 2-circuit brake, wet disk brakes
- Spring-loaded parking brake

Steering:

- 44° articulated steering

Tyres:

	Size:	Min. total width
• Standard:	23.1 x 26	2550 mm
• Optional:	18.4 x 26	2300 mm
	28L-26	2750 mm

Diesel tank:

- 185 litres

Hydraulics:

- Pump output: Flow rate: 152 l/min at 1600 rpm
Pressure: up to 350 bar
- Tank: 90 litres
- Hydraulic liquid: Standard: HLP-46 mineral oil
Optional: Panolin HLP SYNTH with Kleenoil
Microfiltration water hazard class 1

Cabin:

- Rubber-mounted, soundproofed
- Tested safety cab
- Mechanically suspended comfort seat
- Hot water heating

Electrics:

- 24 V, 90 A alternator
- 2 maintenance-free dry-cell batteries

Instruments:

- Tachometer with operating hour counter, coolant temperature, tank gauge, indicator lights

Winch:

- Standard: Adler HY 20-O (2 x 100 kN) double-drum winch
Max. cable take-up of 14 mm, 100 m without cable equipment!
- Optional: Adler HY 24-O (2 x 120 kN) double-drum winch
Max. cable take-up of 14 mm, 140 m
Adler HY 24-LO (2 x 120 kN) double-drum winch
Max. cable take-up of 14 mm, 190 m
Adler HY 32-O (2 x 160 kN) double-drum winch
Max. cable take-up of 14 mm, 150 m
Adler HY 32-LO (2 x 160 kN) double-drum winch
Max. cable take-up of 14 mm, 200 m

Weight:

- 10800 kg (series)
- Weight distribution: Front axle: 60%
Rear axle: 40%

Standard equipment:

- 2200 mm wide front polder shield, lowerable straight shield
2200 mm wide, fire extinguisher, first-aid kit, warning triangle, tool set

Special equipment:

- Radio control, cable winch, wireless driving, clamping arms for Front shield, steering with joystick, street lighting set